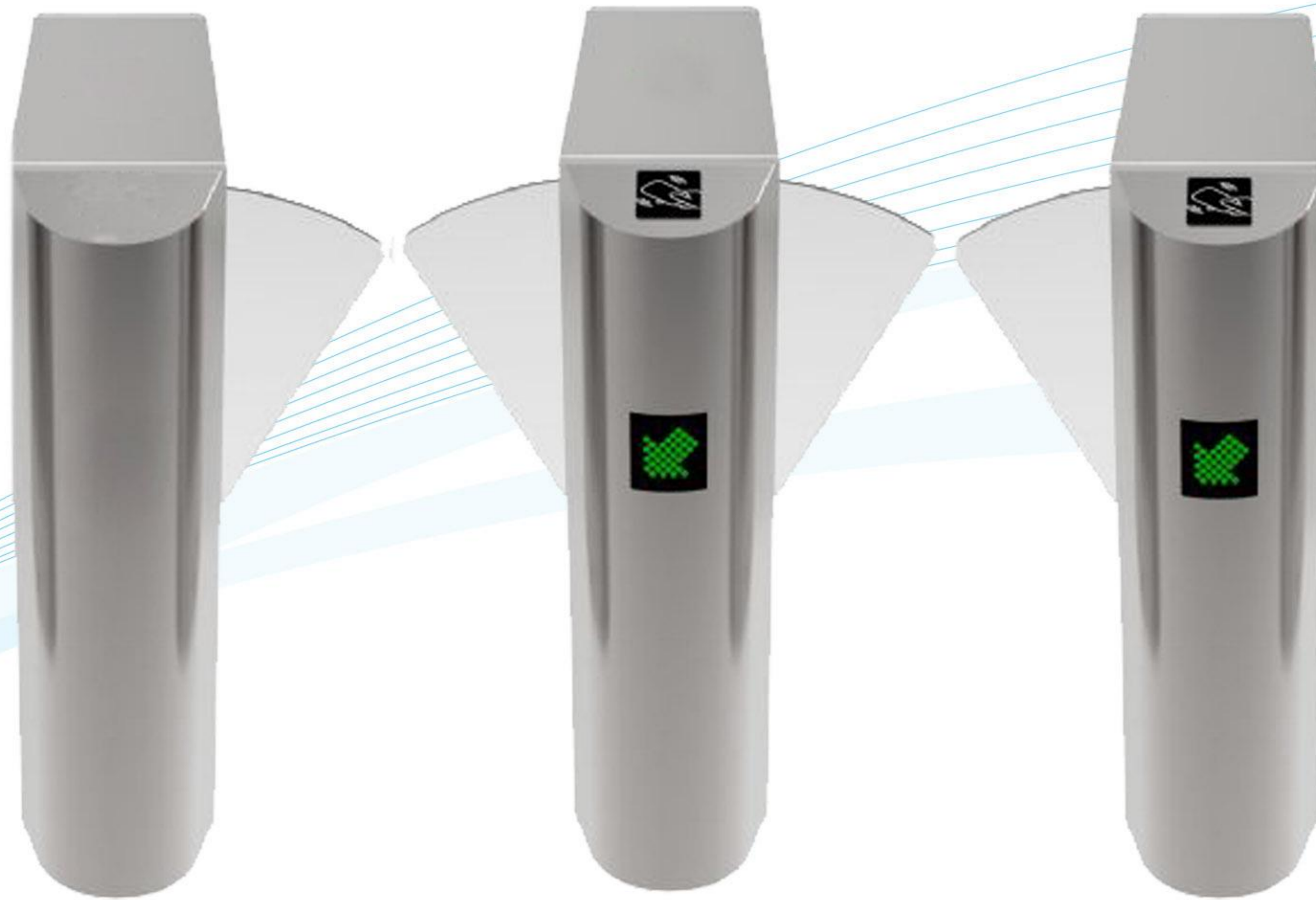


## FB1200



## ➔ Flap Barrier- FB1200

Type : Multiple lane (Two or more)  
Flap Width: 260mm  
Passage width : 580mm  
Operation Type : Oneway - Bidirectional  
No of flaps : 2

Flow Rate : 25-30 passages/minute

Input control signal : Dry contact

Ingress protection Degree : IP45

Flap opening/closing time : 1Sec

### Features :

#### Electronic Anti-Pinch Function:

Auto-suspension of door closure  
when human is detected

#### Optional battery backup :

- Flap release when power off(optional  
with backup battery)

#### Multi Battery Mode:

- In Emergency Mode, flaps automatically opens for entrance
- In Power-supply Mode, flaps remain normal operation using battery power

#### LED light for lane indication

#### Fire alarm Integration (optional)

Advanced sensor system

#### Power Supply :

SMPS - Input : AC 220V / 110V, 50Hz / 60Hz

SMPS - output : DC +24V, 5A; +12V, 3A

Power Rate : Idle = 30W, Working = 80W

Dimension(mm) : L = 1400, W = 3000, H = 1008

Gross Weight : 156kg

Operating Temperature : -28°C to +60°C

Operating Humidity : 5% - 85%

Operating Environment : Indoor